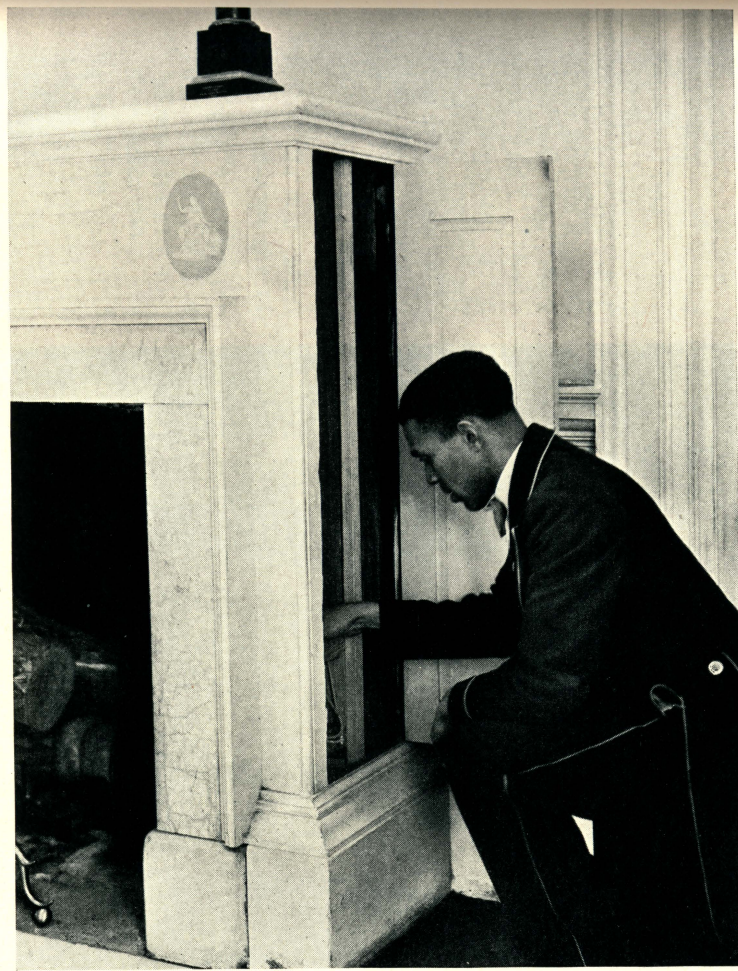


Photograph by Edwin L. Wisherd

#### GLASS DOORS ARE AMONG THE "GADGETS" AT MONTICELLO

A concealed mechanical device by which double glass doors move in unison when only one of them is touched is in as perfect working order to-day as when Jefferson installed it (see text, pages 486-487).



Photograph by Jacob Gayer

#### THIS DUMB-WAITER WAS A JEFFERSONIAN DEVICE

The lower terminus was in the wine cellar, from which the apparatus brought up full bottles to the dining room and sent back empties on the return trip (see text, page 486).